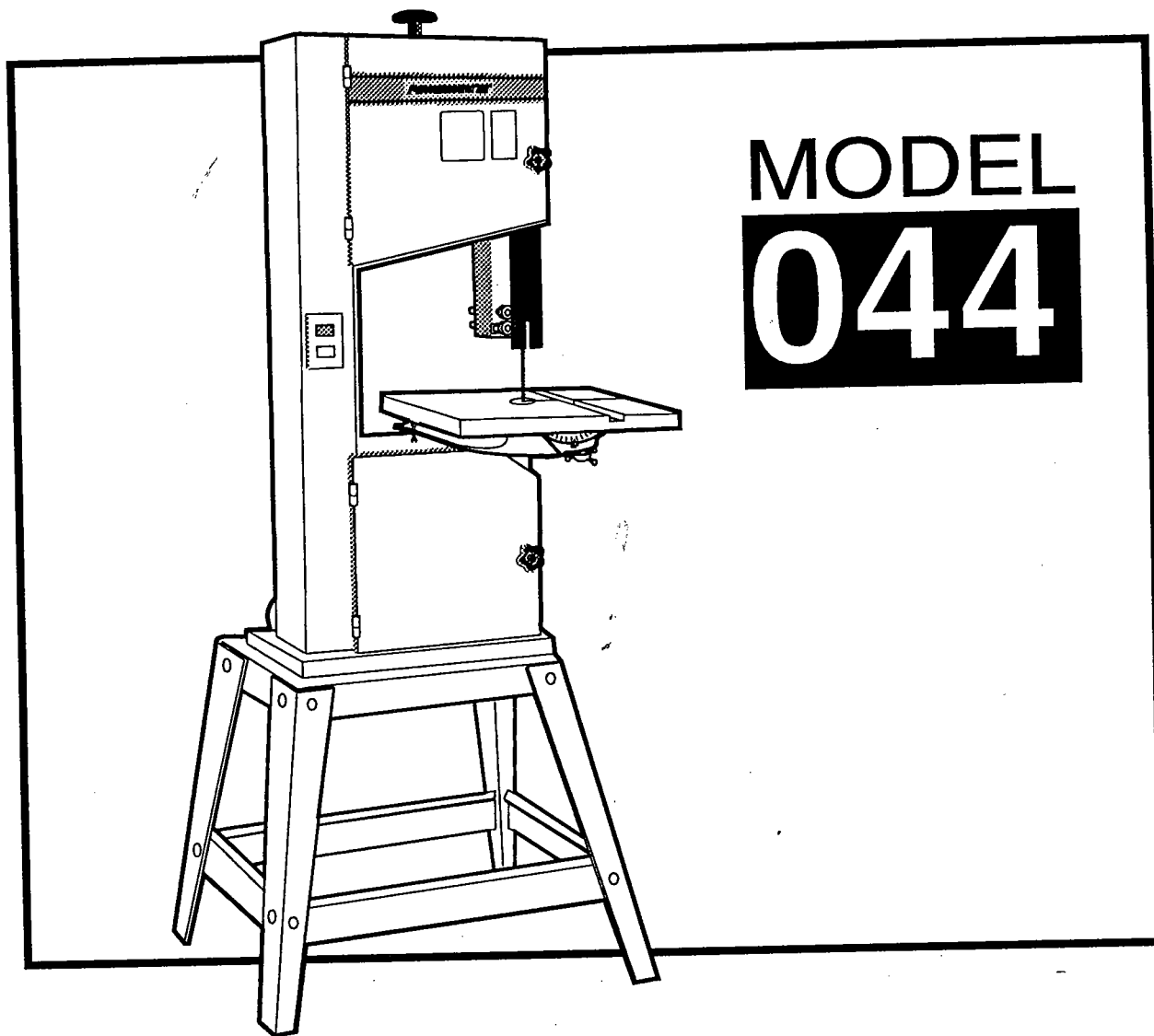


\$2.50

# 14" BAND SAW INSTRUCTION MANUAL



Better By Design

**POWERMATIC®**  **®**

McMINNVILLE, TENNESSEE 37110 □ AC 615 / 473-5551

## FOREWORD

This manual has been prepared for the owner and those responsible for the operation of a Powermatic Model 44, band saw.

Its purpose, aside from machine operation, is to promote safety through the use of accepted correct operating and maintenance procedures. Read the safety and maintenance instructions thoroughly before operating or servicing the machine.

In order to obtain maximum life and efficiency from your Powermatic band saw, and to aid in operating and maintaining the machine with safety, read this manual thoroughly and follow all instructions carefully.

The specifications put forth in this manual were in effect at the time of publication. However, owing to Powermatic's policy of continuous improvement, changes to these specifications may be made at any time without obligation on the part of Powermatic.

The information and recommendations contained in the publication come from sources believed to be reliable and to represent the best current practice. Powermatic does not intend this manual to be a complete course of instruction on how to use this machine with safety and does not guarantee or represent that the information is absolutely correct or sufficient. In addition, it cannot be assumed that all acceptable safety measures are listed or that other additional measures are not needed under particular or exceptional circumstances or conditions.

## POWERMATIC WARRANTY

Powermatic will repair or replace, at its expense and at its option, any Powermatic machine, machine part or machine accessory which in normal use has proven to be defective in workmanship or material, provided that the customer returns the product prepaid to the Authorized Powermatic Distributor from which the machine was purchased within one year and provides Powermatic with reasonable opportunity to verify the alleged defect by inspection. Powermatic will not be responsible for any asserted defect which has resulted from normal wear, misuse, abuse or repair or alteration made or specifically authorized by any one other than an authorized Powermatic service representative. Under no circumstances will Powermatic be liable for incidental or consequential damages resulting from defective products. This warranty is Powermatic's sole warranty and sets forth the customer's exclusive remedy, with respect to defective products, all other warranties expressed or implied whether of merchantability, fitness for purpose or otherwise are expressly disclaimed by Powermatic.

**THIS IS POWERMATIC'S SOLE WRITTEN WARRANTY. ANY AND ALL OTHER WARRANTIES WHICH MAY BE IMPLIED BY LAW, INCLUDING ANY WARRANTIES FOR MERCHANTABILITY OR FITNESS FOR A PARTICULAR PURPOSE, ARE HEREBY LIMITED TO THE DURATION OF THIS WRITTEN WARRANTY. POWERMATIC SHALL NOT BE LIABLE FOR ANY LOSS, DAMAGE, OR EXPENSES DIRECTLY OR INDIRECTLY RELATED TO THE USE OF ITS PRODUCTS OR FROM ANY OTHER CAUSE OR FOR CONSEQUENTIAL DAMAGES (INCLUDING WITHOUT LIMITATION, LOSS OF TIME, INCONVENIENCE, AND LOSS OF PRODUCTION). THE WARRANTY CONTAINED HEREIN MAY NOT BE MODIFIED AND NO OTHER WARRANTY, EXPRESSED OR IMPLIED, SHALL BE MADE BY, OR ON BEHALF OF, POWERMATIC.**

## TABLE OF CONTENTS

SAFETY:	
DECAL INSTRUCTION .....	4
GENERAL RULES .....	5
SPECIFIC RULES .....	5
INSTALLATION:	
RECEIVING THE BAND SAW .....	6
CLEANING .....	6
STAND ASSEMBLY .....	6
BAND SAW ASSEMBLY .....	6
TABLE ASSEMBLY .....	7
ELECTRICAL CONNECTION .....	8
BAND SAW ADJUSTMENTS:	
BLADE TENSION .....	8
BLADE ALIGNMENT .....	9
UPPER BLADE GUIDE .....	9
LOWER BLADE GUIDE .....	10
TILTING THE TABLE .....	10
BLADE REPLACEMENT .....	10
TROUBLE SHOOTING .....	11
PARTS LIST / WIRING DIAGRAM FOR MOTOR CONVERSION .....	12
EXPLODED VIEW .....	13
PARTS LIST .....	14
EXPLODED VIEW .....	15

## SPECIFICATIONS

TABLE SIZE .....	15" X 15"
TABLE TILT .....	45 DEGREES RIGHT, 15 DEGREES LEFT
SAW BLADE CAPACITY .....	1/4" TO 3/4" WIDE
BLADE SPEED .....	3000 FPM
TABLE HEIGHT FROM FLOOR .....	42"
CUTTING CAPACITY .....	14" X 9"
MOTOR .....	1 HP / INDUCTION WITH U/L
FRAME STRUCTURE .....	FABRICATED STEEL WITH HINGED DOORS
BLADE LENGTH .....	102"

To order parts or reach our service department, please call our toll free number between 8:00 A.M. and 4:30 P.M. (CST), Monday through Friday. Having the Model Number and Serial Number of your machine available when you call will allow us to serve you quickly and accurately. Locating the EDP number of the part(s) required from your parts manual will also expedite your order.

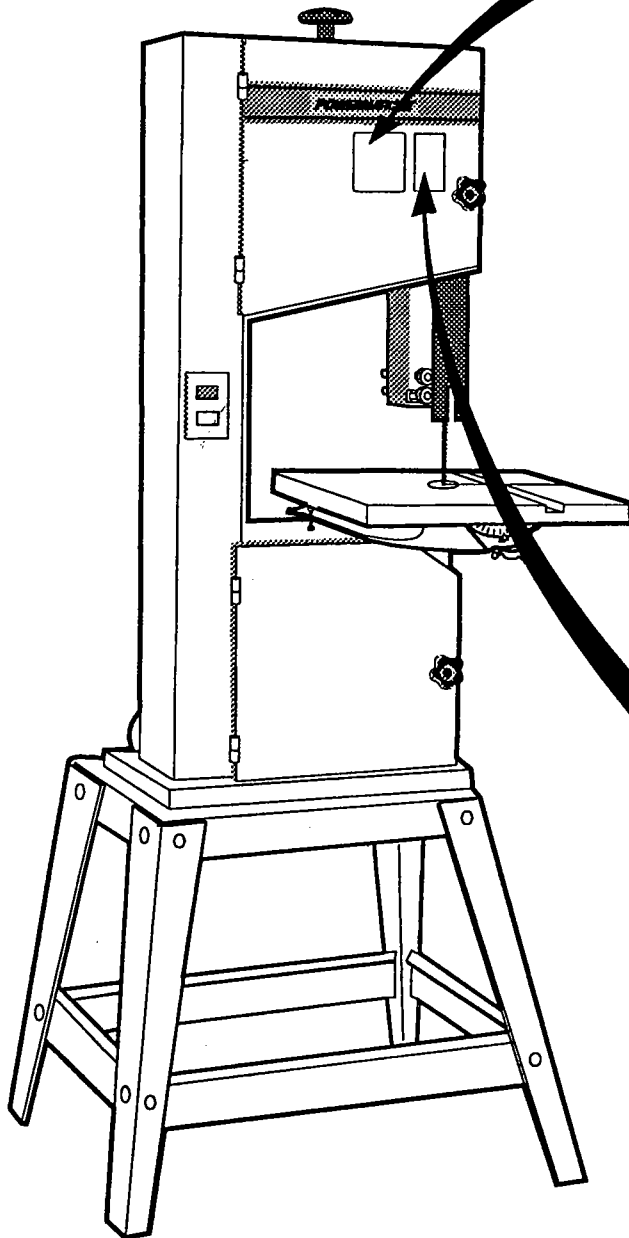
Phone No.: 800-248-0144

Fax No. : 615-473-7819

If you are calling from Canada, please call 800-238-4746

# SAFETY RULES

CAREFULLY READ INSTRUCTION MANUAL BEFORE OPERATING MACHINE.  
DO NOT OPERATE WITHOUT ALL GUARDS AND COVERS IN POSITION.  
BE SURE MACHINE IS ELECTRICALLY GROUNDED.  
REMOVE OR FASTEN LOOSE ARTICLES OF CLOTHING SUCH AS NECKTIES, ETC. CONFINE HAIR.  
REMOVE JEWELRY SUCH AS FINGER RINGS, WATCHES, BRACELETS, ETC.  
USE SAFETY FACE SHIELD, GOGGLES, OR GLASSES TO PROTECT EYES AND OTHER PERSONAL SAFETY EQUIPMENT AS REQUIRED.  
STOP MACHINE BEFORE MAKING ADJUSTMENTS OR CLEANING CHIPS FROM WORK AREA.  
KEEP THE FLOOR AROUND THE MACHINE CLEAN AND FREE FROM SCRAPS, SAWDUST, OIL OR GREASE TO MINIMIZE THE DANGER OF SLIPPING.



## WARNING

For Your Own Safety Read Instruction Manual Before Operating Saw

1. Wear eye protection.
2. Do not remove jammed cutoff pieces until blade has stopped.
3. Maintain proper adjustment of blade tension, blade guides, and thrust bearings.
4. Adjust upper guide to just clear workpiece.
5. Hold workpiece firmly against table.

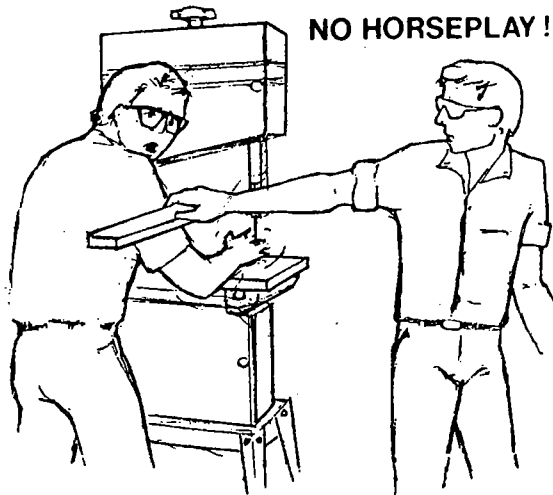
machi  
custo  
purch  
inspe  
misus  
matic  
dama  
custo  
of me

THIS  
WHI  
OR I  
THIS  
OR I  
FRO  
LIM  
WAI  
EXP

## SAFETY: GENERAL

**READ THE MANUAL:** Always read the owner's manual carefully before attempting to use the machine. Know the limitations and hazards associated with its use.

**PROTECTION:** Take every precaution to protect yourself, others around you, and the machine itself from improper use. Safety is a combination of common sense, knowing how to use the machine, and being alert at all times when using the machine. Horseplay should never be tolerated around any power machinery.



**DRESS CODE:** Do not wear loose clothing, neckties, jewelry, or gloves that can get caught in moving parts. Confine long hair. Keep sleeves above the elbow.

**ELECTRICAL GROUNDING:** Your machine must be electrically grounded. If a cord and plug are used, make certain the grounding lug connects to a suitable ground. Follow the grounding procedure indicated by the National Electric Code. Keep power tools in dry areas free from moisture.

**GUARDS:** Be sure machine guards are in place and in good working order. Use them at all times on operations where they can be used. If a guard must be removed for any operation, make sure it is replaced immediately following completion of that operation.

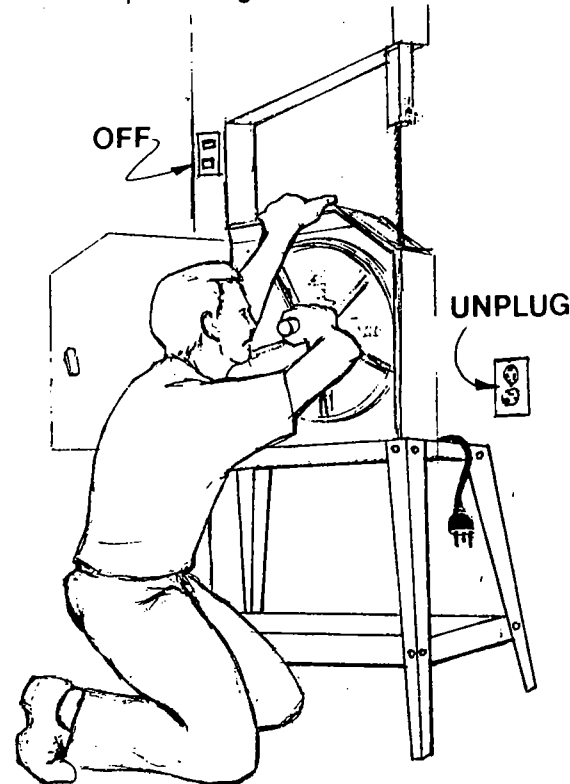
**HOUSEKEEPING:** Before turning on machine remove all extra equipment such as keys, wrenches, scrap, stock, and cleaning rags from the machine. Keep the area around machine clean and free of scrap material and saw dust to minimize the danger of slipping.

**DON'T FORCE TOOL:** It will do the job better and safer at the rate for which it was designed.

**DON'T OVERREACH:** Keep proper footing and balance at all times.

**POWER ON:** On machines equipped with a manual starter make sure the starter is in the "OFF" position before connecting power to machine.

**POWER OFF:** Make sure the machine is either unplugged or electrically disconnected and locked out when performing maintenance or service work.

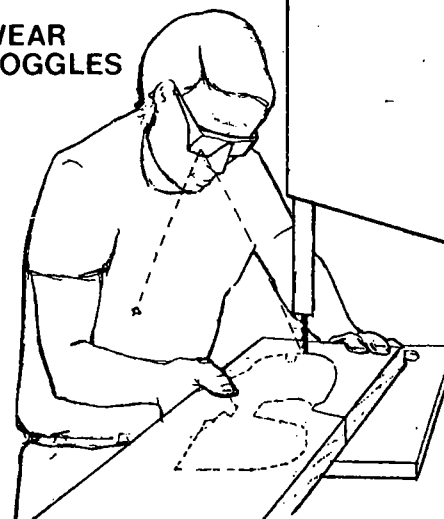


## SAFETY: SPECIFIC

**READ THE MANUAL:** Read, understand and follow the safety instructions found in this manual. One SAFETY RULE decal and one CAUTION decal are placed on the machine as reminders of good safety practices. This band saw is intended for indoor use only.

**EYES:** Always wear safety goggles that comply with ANSI Z87.1 and a face shield if dusty. Wear ear plugs or muffs during extended periods of operation.

**WEAR GOGGLES**



**"RELIEF" CUTS:** Make "relief" cuts before cutting long curves.

**LARGE STOCK:** When cutting large or oversize stock always make sure the material is supported at table height.

**IRREGULAR STOCK:** Care should be taken when cutting material which is irregular in cross-section. The blade could pinch before the cut is completed. Any stock, such as frame molding, must lay flat on the table surface and not be allowed to rock.

**INCOMPLETE CUTS:** Be sure to TURN OFF the saw before backing the stock out of an incomplete cut.

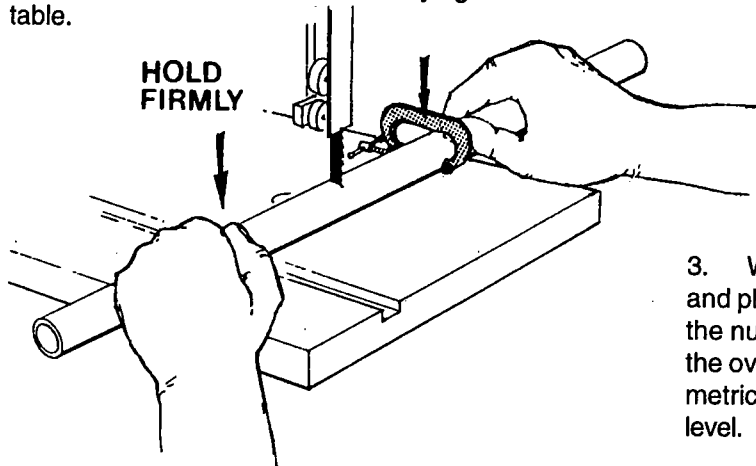
**BLADE TENSION:** The blade must be properly tensioned before operating saw. Failure to do so could result in breaking the saw blade and possible injury.

**HAND SAFETY:** Always keep fingers and hands away from the blade. Position hands in such a way that in the event of a sudden slip, a hand would not move into or toward the blade.

**SECURE THE STOCK:** Always hold the stock firmly against the table. DO NOT attempt to saw any stock that does not have a flat surface without a suitable support. DO NOT cut pieces of material too small to hold by hand.

**RATE OF FEED:** Do not feed the workpiece too fast while cutting. Feed the workpiece only fast enough for the blade to cut.

**TUBING:** Dowel rods or tubing have a tendency to roll while being cut and cause the blade to "bite". Round material should be held firmly against the table.



**WARNING: ALWAYS KEEP ALERT. DO NOT ALLOW FAMILIARITY (GAINED FROM FREQUENT USE OF YOUR BAND SAW) TO CAUSE A CARELESS MISTAKE. ALWAYS REMEMBER THAT A CARELESS FRACTION OF A SECOND IS SUFFICIENT TO INFLICT SEVERE INJURY.**

## INSTALLATION

### RECEIVING THE BAND SAW

Remove the band saw and accessories from the shipping container and check for damage. Any damage or missing parts should be reported to your distributor immediately. Before proceeding with assembly, read your maintenance manual thoroughly. Familiarize yourself with correct assembly, setup, maintenance and safety procedures.

**CLEANING:** The protective coating on the band saw should be removed with a soft cloth moistened with kerosene. DO NOT USE acetone, gasoline or lacquer thinner for cleaning. An occasional coat of paste wax on the table surface will allow the wood stock to glide smoothly across the work surface.

### STAND ASSEMBLY

1. To assemble the band saw stand, first attach the braces to each set of legs as shown in Figure 1. DO NOT tighten.

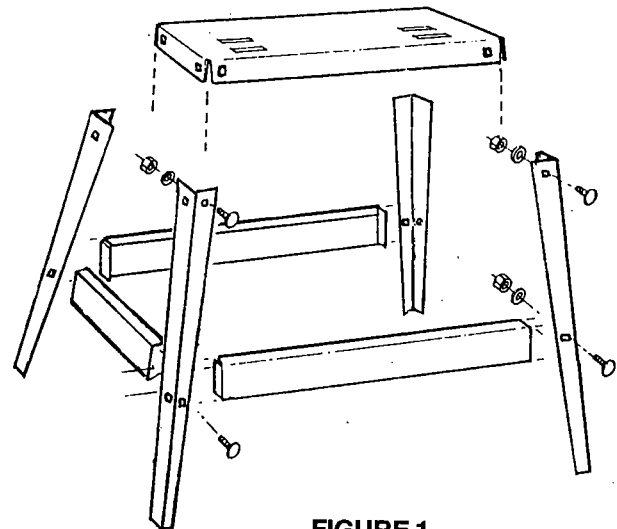
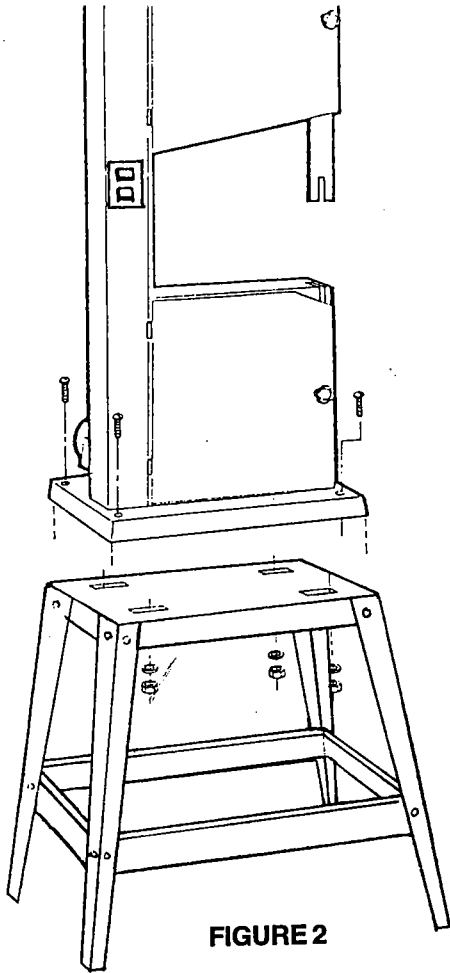


FIGURE 1

2. Attach the stand top to both sets of legs, as shown in Figure 2. DO NOT tighten.
3. With the band saw stand loosely assembled and placed on a flat surface begin to tighten down all the nuts, screws and washers. Check to see that the overall assembled shape of the stand is symmetrical, sits solid on the floor, and the stand top is level.

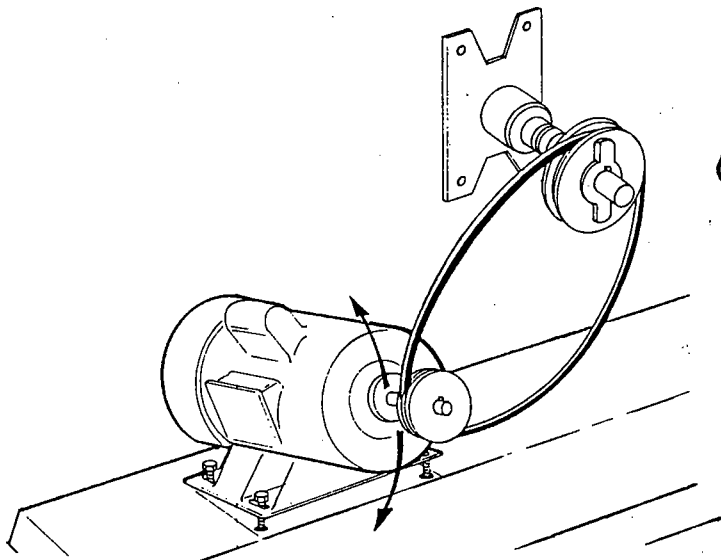
### BAND SAW ASSEMBLY

1. Position the band saw on the stand lining up the four holes in the base with the slotted holes in the stand as shown in Figure 2 and secure with four screws, nuts and washers. DO NOT tighten down.



**FIGURE 2**

2. Attach the pulley to the motor shaft and at this time, remove the lower wheel to expose the lower wheel pulley (see exploded view, page 15).
3. Place the V-belt over the wheel pulley. Loosen the hexagonal head screws holding the motor to the base and raise the motor to allow the belt to slip on to the motor pulley as shown in Figure 3.



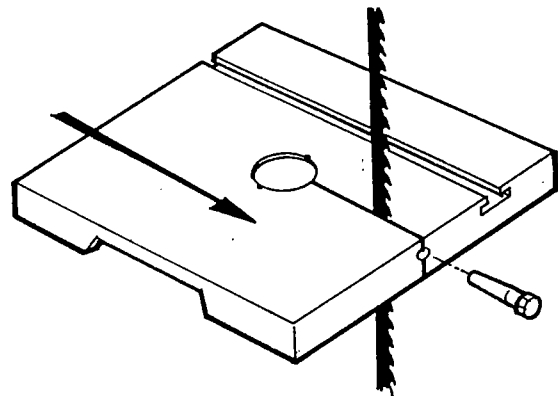
**FIGURE 3**

4. Carefully align the motor pulley to the wheel pulley by adjusting the motor forward or back by means of the slotted holes on the motor mount.

5. With the pulleys aligned, snug the screws attaching the motor to the base and check the belt tension. Correct belt tension is achieved with a inch deflection at the middle of the belt.
6. When correct belt tension is reached, tighten down the hexagonal screws securing the motor to the base.

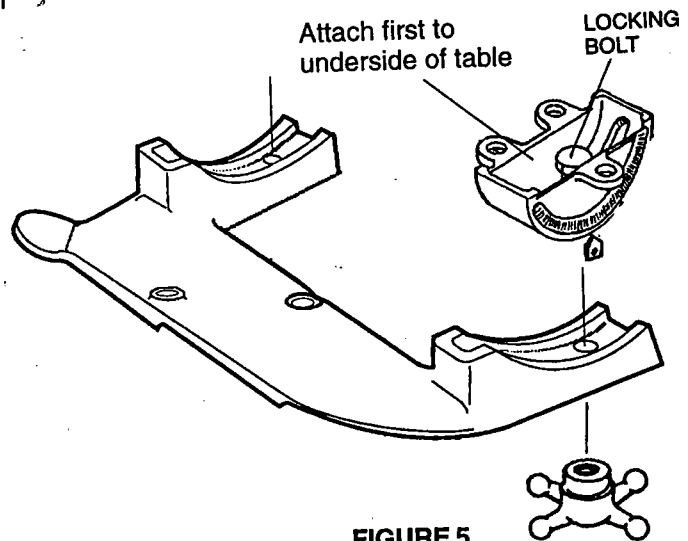
**TABLE ASSEMBLY:**

1. The band saw table is shipped with the trunnions and the tapered pin attached. Before installing the table, remove the tapered pin and loosen the hex head screws holding the trunnion to the underside of the table.
2. Guide the saw blade through the table slot from the rear as shown in Figure 4.



**FIGURE 4**

3. Insert the trunnion locking bolt into the hole in bracket, Figure 5. Thread locking knob onto bolt to tighten. Follow same procedure for rear trunnion.



**FIGURE 5**

4. Retighten the four hex head screws holding the trunnion to the underside of the table.
5. Replace the tapered pin.

## ELECTRICAL CONNECTION

The 14" band saw is equipped with a 1 HP motor with a blade speed of 3000 and wired to operate on 110/120 volts, 60 Hz, alternating current.

**WARNING: THE BAND SAW MUST BE GROUNDED DURING OPERATION TO PROTECT THE OPERATOR FROM ELECTRIC SHOCK. IF AN ELECTRIC SHOCK OCCURS THERE IS THE POTENTIAL OF A SECONDARY HAZARD SUCH AS YOUR HAND CONTACTING THE SAW BLADE.**

### GROUNDIRG INSTRUCTIONS

#### 1. All grounded, cord connected tools:

In the event of a malfunction or breakdown, grounding provides a path of least resistance for electric current. To reduce the risk of electric shock, this tool is equipped with an electric cord having an equipment-grounding conductor and a grounding plug. The plug must be plugged into a matching outlet that is properly installed and grounded in accordance with all local codes and ordinances. Do not modify the plug provided - if it will not fit the outlet, have the proper outlet installed by a qualified electrician.

Improper connection of the equipment-grounding conductor can result in a risk of electric shock. The conductor with insulation having an outer surface that is green with or without yellow stripes is the equipment-grounding conductor. If repair or replacement of the electric cord or plug is necessary, do not connect the equipment grounding conductor to a live terminal.

Check with a qualified electrician or service personnel if the grounding instructions are not completely understood, or if in doubt as to whether the tool is properly grounded.

Use only 3-wire extension cords that have 3-prong grounding plugs and 3-pole receptacles that accept the tool's plug.

Repair or replace damaged or worn cord immediately.

#### 2. Grounded, cord-connected tools intended for use on a supply circuit having a nominal rating less than 150 volts:

This tool is intended for use on a circuit that has an outlet that looks like the one illustrated in Sketch A Figure 6. The tool has a grounding plug similar to the one in Sketch A.

### GROUNDIRG METHODS

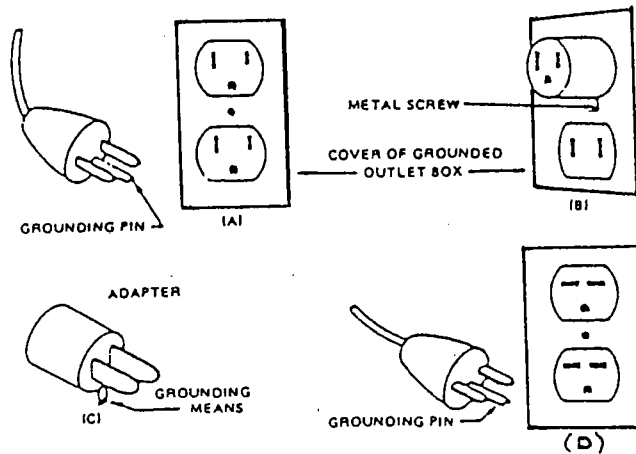


FIGURE 6

A temporary adapter, which looks like the adapter illustrated in sketches B and C, may be used to connect this plug to a 2-pole receptacle as shown in sketch B if a properly grounded outlet is not available. The temporary adapter should be used only until a properly grounded outlet can be installed by a qualified electrician. The green-colored rigid ear, lug, and the like, extending from the adapter must be connected to a permanent ground such as a properly grounded outlet box.

#### 3. Grounded, cord-connected tools intended for use on a supply circuit having a nominal rating between 150-250 volts, inclusive:

This cord is intended for use on a circuit that has an outlet that looks like the one illustrated in sketch D. The tool has a grounding plug that looks like the plug illustrated in sketch D, Figure 6. Make sure the tool is connected to an outlet having the same configuration as the plug. No adapter is available or should be used with this tool. If the tool must be reconnected for use on a different type of electric circuit, the reconnection should be made by qualified service personnel and after reconnection, the tool should comply with all local codes and ordinances.

## BAND SAW ADJUSTMENTS

### BLADE TENSION

The hand tension adjusting knob A, Figure 7, provides the correct tension for the band saw blade. The upper wheel is spring loaded. Simply raise or lower the wheel by turning the adjusting knob.

**NOTE:** When the band saw is not in use, relax the blade tension.



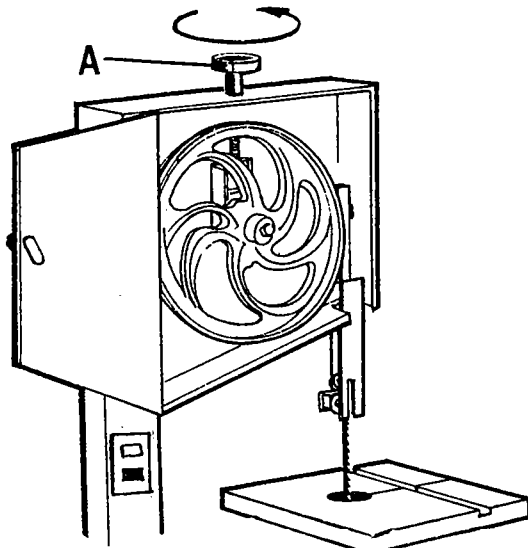


FIGURE 7

### BLADE ALIGNMENT

With tension applied to the blade, slowly revolve the upper wheel clockwise by hand and closely observe for blade travel in the center of the upper tire. If the blade begins to move towards the front edge, adjust by turning the alignment screw handle B, Figure 8 to the LEFT or counterclockwise and this will allow the blade to adjust itself towards the back of the blade track. If the blade begins to move toward the back edge adjust this action by turning the alignment screw handle to the right in a clockwise direction. Continue to make slight adjustments until the blade runs smoothly and without back and forth movement on the wheel.

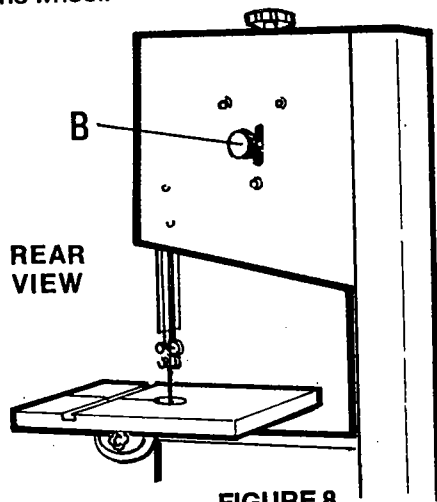


FIGURE 8

### BLADE GUIDE ADJUSTMENT

Blade guide adjustments are probably the most important adjustments you have to perform on the band saw. In order to maintain satisfactory results with the band saw, the blade guides must be kept properly adjusted. Blade guide adjustments are made AFTER the blade is tensioned and tracking properly. If adjustment is necessary, do the following.

### UPPER BLADE GUIDE:

The upper blade guide assembly is shown in Figure 9. The upper blade guide bearings are held in place by two hex head screws which attach to a guide block behind each bearing. The guide blocks are each attached by screws to a single bracket. Both bearings should lightly touch the blade's sides. Adjustments are made with the two screws that attach the guide blocks to the bracket.

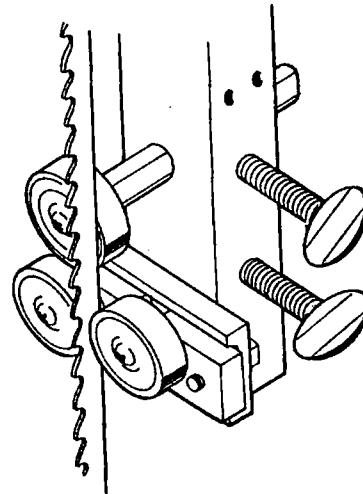


FIGURE 9

The blade guide bearing B prevents the blade from being pushed too far back and protects the blade from teeth damage. This bearing should be set  $\frac{1}{64}$  inch behind the blade as shown in Figure 10. To adjust, loosen lock knob A and reposition the bearing shaft until the  $\frac{1}{64}$  inch spacing is achieved. Retighten lock knob A.

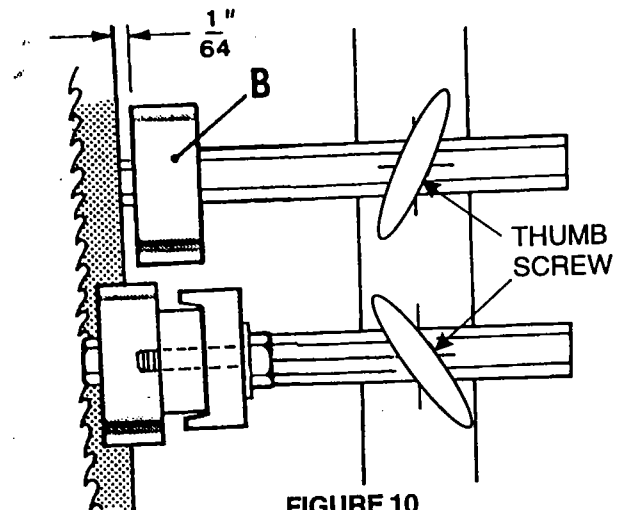


FIGURE 10

## LOWER BLADE GUIDES and bearing adjustment.

The lower blade guide and bearing adjustment should be made immediately following adjustments to the upper guide and bearings. The lower blade guide assembly is shown in Figure 11.

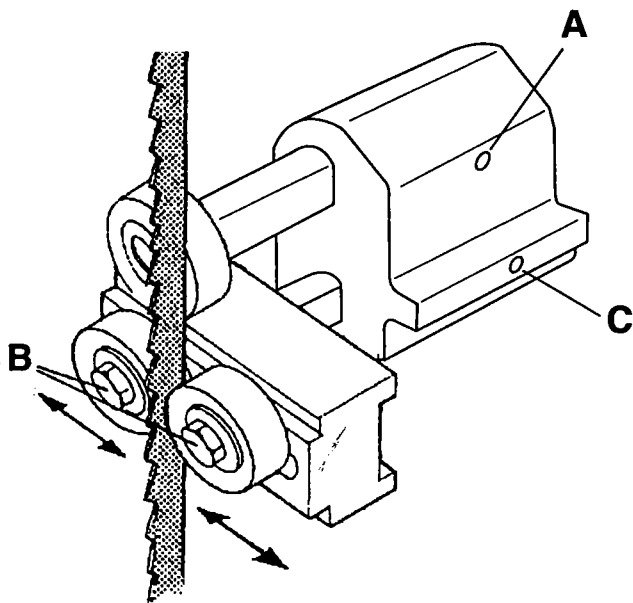


FIGURE 11

**LOWER GUIDE BEARING** should be set  $1/64$ " behind the blade and this adjustment is made by loosening set screw A, and moving the bearing shaft forward or back in the housing. Bearing movement to the left or right of blade is made with the two hexagonal head screws, B.

To adjust, do the following:

Loosen the hexagonal head screws, on both bearings. Notice that: these bearings are attached directly to the bracket without blocks.

Reposition both bearings on the bracket to make light contact with both sides of the saw blade and tighten bearing screws.

Forward or backward movement is made by loosening set screw C.

## TILTING THE TABLE

Your 14" band saw table can be tilted 45 degrees to the right and 15 degrees to the left. To tilt the table:

1. Loosen the hand knobs, on front and rear, A Figure 12.
2. Tilt the table to the desired angle shown by the degree scale on the rear trunnion and retighten both hand knobs A.

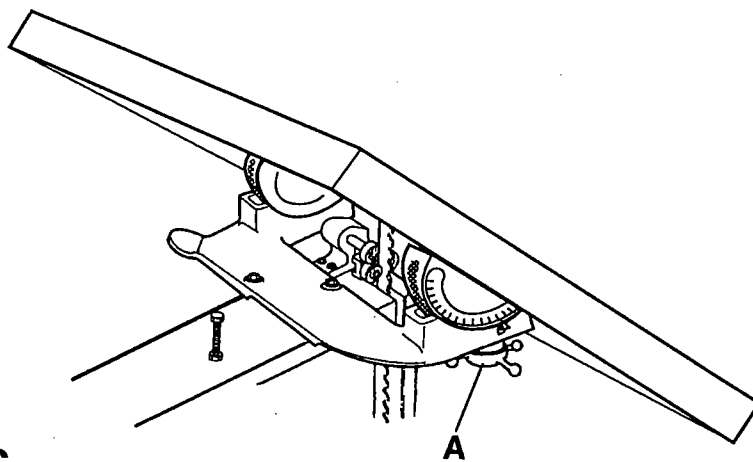


FIGURE 12

## BLADE REPLACEMENT

The following procedure is necessary to replace or change a blade:

1. TURN THE SWITCH "OFF" AND DISCONNECT THE BAND SAW FROM ITS POWER SOURCE.
2. Release tension on the band saw blade by turning the blade tension handle A, Figure 13, counterclockwise.
3. Remove the tapered table pin and table insert.

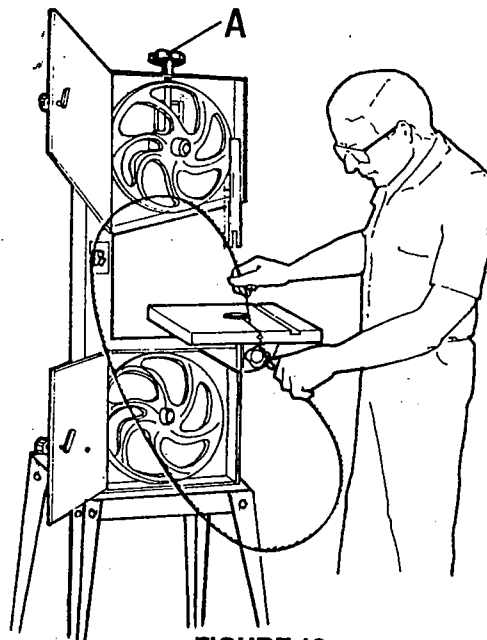


FIGURE 13

4. Slip the blade off the wheels and guide it out through the table slot.
5. Slip on the new blade reversing the previous

procedure and follow the steps described on page 9 for blade alignment.

6. Replace the tapered table pin and table insert.

## **TROUBLE SHOOTING:**

### **BREAKING BLADES**

**Since breaking blades is a common problem associated with a band saw, the operator should be aware of the following causes:**

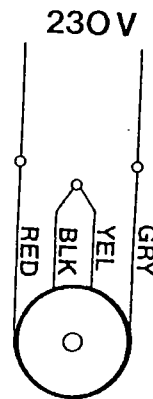
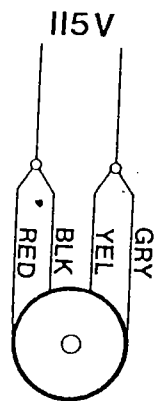
1. Faulty alignment.
2. Blade guides not adjusted properly.
3. Feeding too fast.
4. Forcing or twisting blade around a short radius.
5. Blade too tight.
6. Dull teeth.
7. Blade has "lumpy" or poor braze or weld.
8. Blade left running when not in use.

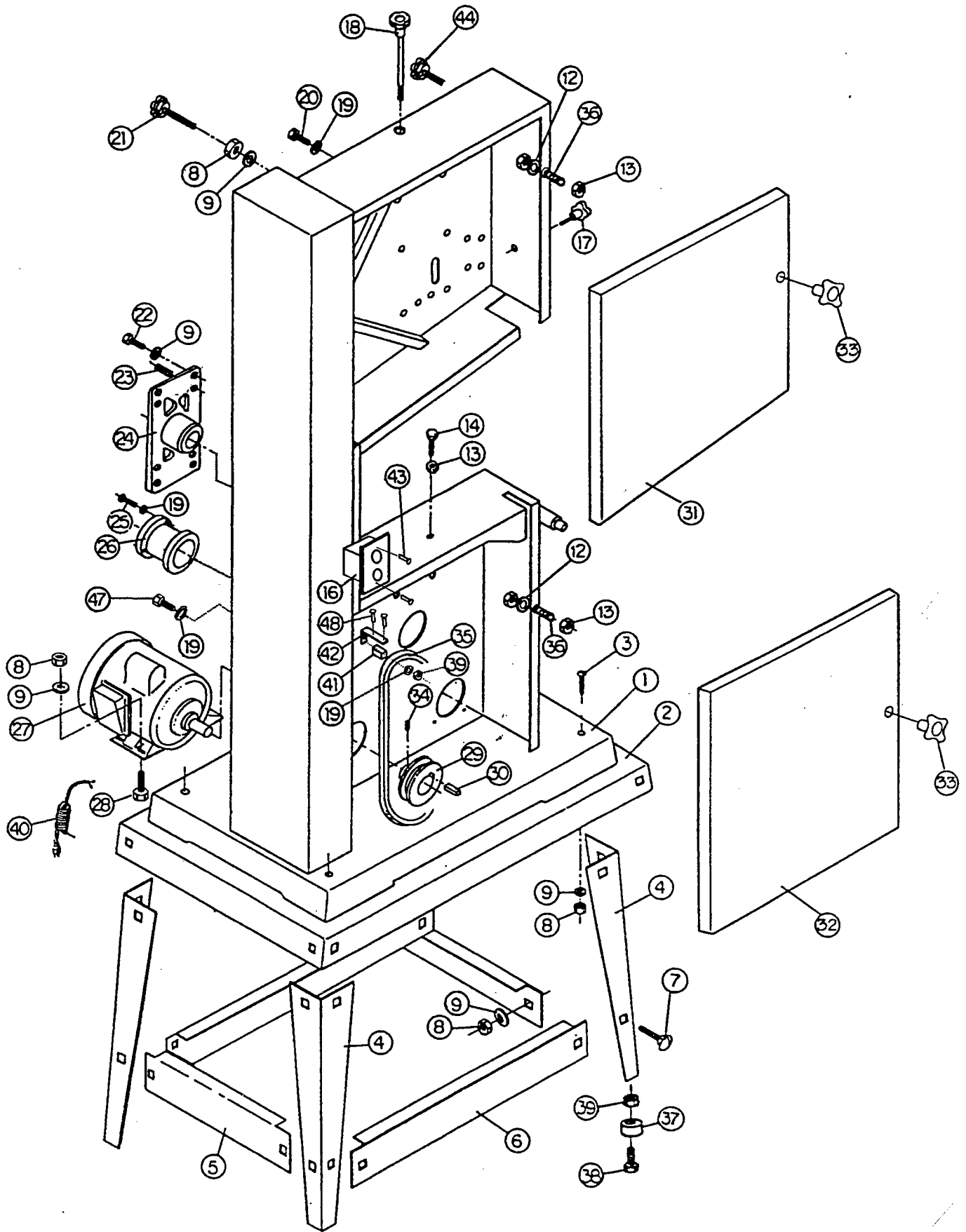
**WARNING: FOR YOUR SAFETY, TURN SWITCH "OFF", AND REMOVE PLUG FROM POWER SOURCE OUTLET BEFORE TROUBLE SHOOTING YOUR BAND SAW.**

# PARTS LIST

NO.	PART NO.	DESCRIPTION	NO.	PART NO.	DESCRIPTION
1	6286208	BASE AND FRAME, WELDED	25	6286124	SCREW, ROUND HD. 1/4" X 1/2"
2	6286101	TOP, STAND	26	6286125	OUTLET, DUST
3	6286232	SCREW, 5/16" X 3"	27	6286209	MOTOR 1 HP
4	6286103	LEG	28	6286239	SCREW, HEX HD. 5/16" X 3/8"
5	6286104	BRACE, SIDE ANGLE	29	6286128	PULLEY, 2-1/2"
6	6286105	BRACE, FRT. AND REAR ANGLE	30	6286129	KEY 5x5x40 mm
7	6286106	BOLT, CAP HD. SQ. SHOULDER 5/16" X 3/4"	31	6286130	DOOR, UPPER WHEEL
8	6286107	NUT, HEX 5/16"	32	6286131	DOOR, LOWER WHEEL
9	6286108	WASHER, 5/16"	33	6286132	SCREW, LOCK KNOB 1/4"
12	6286241	WASHER, SPRING 1/4"	34	6286226	SCREW, SET M6 - 1.0 x 6
13	6286112	NUT, HEX. 1/4"	35	6286191	V-BELT
14	6286113	SCREW, HEX. HD. 1/4" X 1-1/2"	36	6286201	SCREW, SET 1/4" x 1-1/4"
16	6286224	SWITCH, PUSH BUTTON	37	6286202	FOOT, RUBBER PAD
17	6286116	SCREW, LOCK KNOB 5/16" X 1"	38	6286170	SCREW, HEX. HD. 1/4" x 3/4"
18	6286117	SCREW, TENSION 3/8"	39	6286163	NUT, HEX. 1/4"
19	6286118	WASHER, 1/4"	40	6286227	POWER CORD
20	6286233	SCREW, HEX. 1/4" X 3/4"	41	6286229	COPPER BRUSH
21	6286236	SCREW, TILT 5/16" X 1-7/8"	42	6286228	SUPPORT PLATE
22	6286237	SCREW, HEX. HD. 5/16" X 1-1/4"	43	6286230	SCREW, 3/16" X 1"
23	6286238	SCREW, ADJUSTING 5/16" X 1/2"	44	6286231	SCREW, LOCK KNOB 5/16" X 5/8"
24	6286123	HOUSING, LOWER BEARING	47	6286240	SCREW, HEX 1/4" X 5/8"
			48	6286235	SCREW, RD HD 3/16" X 3/8"

## WIRING DIAGRAM: 115V AND 230V





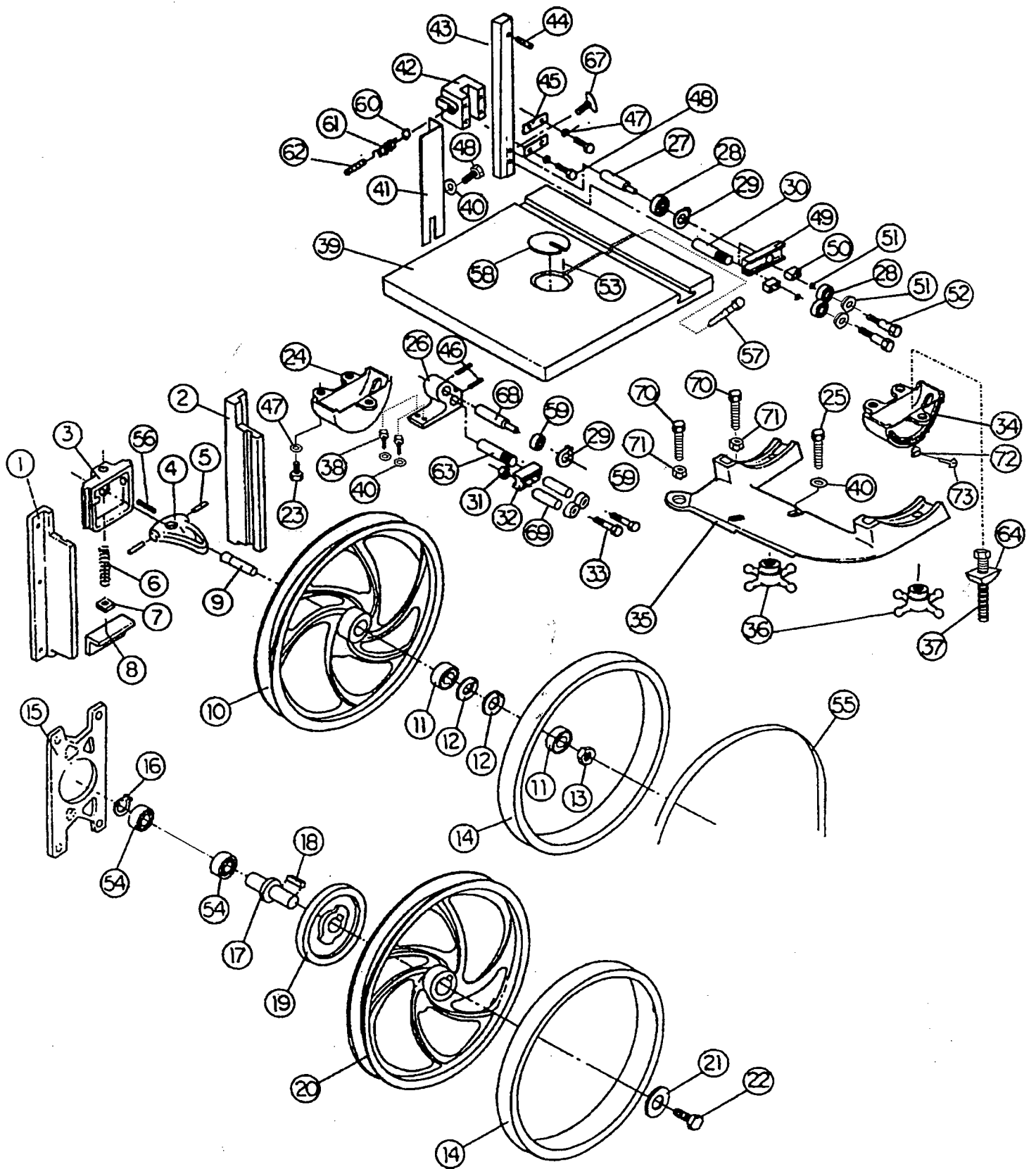
# PARTS LIST

NO.	PART NO.	DESCRIPTION	NO.	PART NO.	DESCRIPTION
1	6286133	LEFT BRACKET, UP. HOUSING	40	6286118	WASHER, 1/4"
2	6286134	RIGHT BRACKET, UP. HOUSING	41	6286215	GUARD, BLADE
3	6286135	BRACKET, UP. MOUNT HOUSING	42	6286248	HOLDER, GUIDE BAR
4	6286136	BRACKET, UPPER WHEEL SHAFT SUPPORT	43	6286249	BAR, GUIDE
5	6286137	PIN, PIVOT	44	6286176	PIN, SPRING (6x16mm)
6	6296138	SPRING	45	6286177	PLATE, CLAMPING
7	6286139	NUT, SQ. TENSION ADJUSTING	46	6286250	THUMB SCREW 1/4" X 1/2"
8	6286140	BRACKET, ANGLE	47	6286241	WASHER, SPRING 1/4"
9	6286141	SHAFT, UPPER WHEEL	48	6286180	SCREW, HEX. HD. 1/4" X 1/2"
10	6296142	WHEEL, UPPER	49	6286181	HOLDER, UPPER BLADE GUIDE
11	6286143	BEARING, 6202ZZ	50	6286182	BLOCK, MOUNTING, UPPER BEARING
12	6286144	RING, RETAINING, R34	51	6286251	WASHER, RETAINING 3/8"
13	6286145	NUT, HEX. 1/2" UNF	52	6286252	SCREW, HEX. HD. 5/16" X 20
14	6286146	TIRE, WHEEL	53	6286185	PIN, 3 X 10
15	6286147	BRACKET, INSIDE LOWER MOUNTING	54	6286706	BEARING 6203 ZZ
16	6286148	RING, RETAINING, S17	55	<del>6286253</del>	BLADE 102-1/2" <b>6286262</b>
17	6286149	SHAFT, LOWER WHEEL	56	6286253	PIN, SPRING 3mm X 30
18	6286150	KEY, 5x5x60 mm	57	6286189	PIN, TAPERED
19	6286151	PULLEY, DRIVEN	58	6286190	INSERT, TABLE
20	6286152	WHEEL, LOWER	59	6286192	BEARING, BALL 608 ZZ
21	6286108	WASHER, 5/16"	60	6286203	BALL, STEEL 5/16" DIAM.
22	6286242	SCREW, HEX. HD. 5/16" X 3/4"	61	6286204	SPRING 8mm X 18
23	6286170	SCREW, HEX. HD. 1/4" X 3/4"	62	6286205	SCREW, SET 3/8" X 3/8"
24	6286243	TRUNNION	63	6286254	ROD, BEARING GUIDE (LOWER) 10 X 70 mm
25	6286237	SCREW, HEX. HD. 5/16" X 1-1/4"	64	6286255	TRUNNION CLAMP SHOE
26	6286158	BRACKET, LOWER GUIDE	67	6286256	SCREW, THUMB 1/4" X 1"
27	6286159	ROD, BEARING GUIDE	68	6286257	ROD, BEARING GUIDE (LOWER) 1/2" X 72
28	6286160	BEARING, BALL 6000 ZZ	69	6286258	LINING
29	6286161	RING, RETAINING, S10	70	6286259	SCREW, HEX. 5/16" X 3"
30	6286162	ROD, BEARING GUIDE	71	6286107	NUT, HEX. 5/16"
31	6286163	NUT, HEX. 1/4"	72	6286260	POINTER
32	6286164	HOLDER, LOWER BLADE GUIDE	73	6286261	SCREW, 3/16" X 1/4"
33	6286165	SCREW, HEX. HD. 1/4" X 36		6286199	UPPER BLADE GUIDE ASSY. (ITEMS 27 - 30 & 49 - 52)
34	6286244	SCALE, DEGREE		6286200	LOWER BLADE GUIDE ASSY. (ITEMS 27, 29 THRU 33, & 59)
35	6286245	TRUNNION BASE			
36	6286246	KNOB, TRUNNION ADJUSTING			
37	6286247	TRUNNION LOCKING SCREW			
38	6286170	SCREW, HEX. 1/4" X 3/4"			
39	6286171	TABLE, BAND SAW			

## OPTIONAL ACCESSORIES NOT SHOWN

PART NO.	DESCRIPTION	PART NO.	DESCRIPTION
6253117	RIP FENCE	6286221	1/4" X 6 HOOK X 102" BLADE
6286218	1/8" X 14 TPI X 102" BLADE	6286222	3/8" X 4 HOOK X 102" BLADE
6286219	3/16" X 4 SKIP X 102" BLADE	6286223	1/2" X 3 HOOK X 102" BLADE
6286220	3/16" X 10 TPI X 102" BLADE	6448005	WORK LIGHT

# EXPLODED VIEW



**POWERMATIC** 

**McMINNVILLE, TENNESSEE 37110**